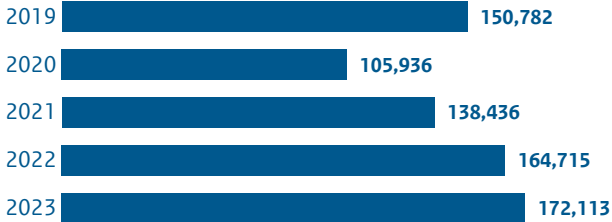


General



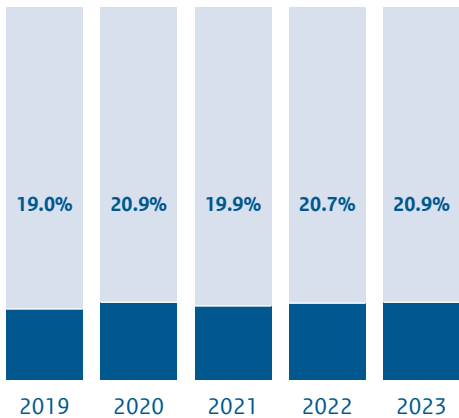
Number of SHC-consultations



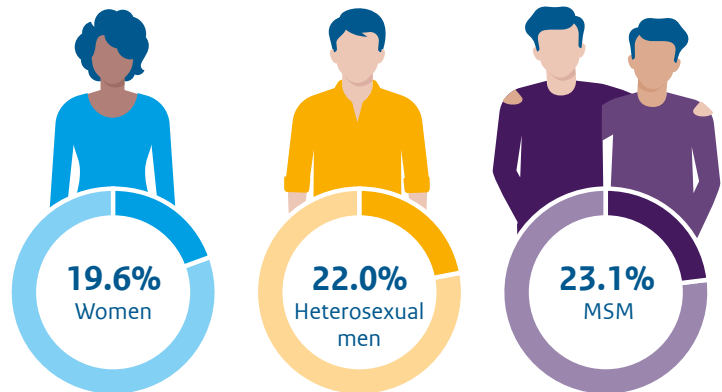
Number of GP-consultations



One or more STI



One or more STI in 2023



Chlamydia



24,048
Diagnoses at SHC

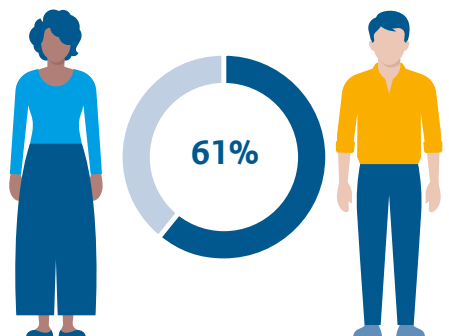


3% decrease
compared with
last year



42,400
Diagnoses at GP

Proportion of diagnoses among women and heterosexual men <25 years



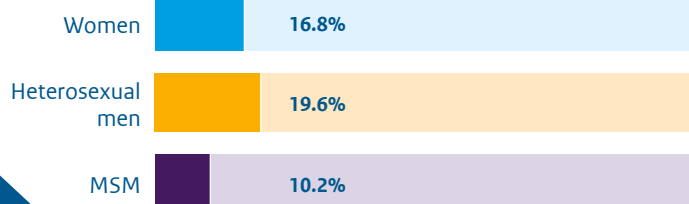
Number of LGV diagnoses among MSM

Lymphogranuloma venereum

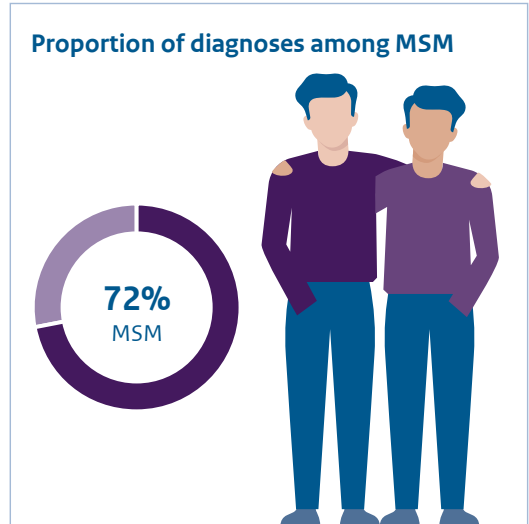
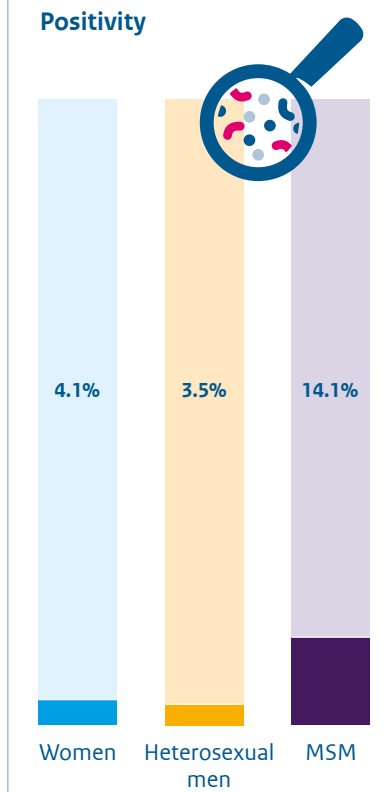
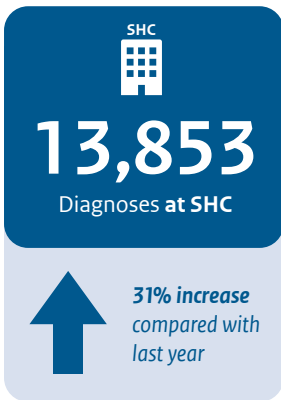


572

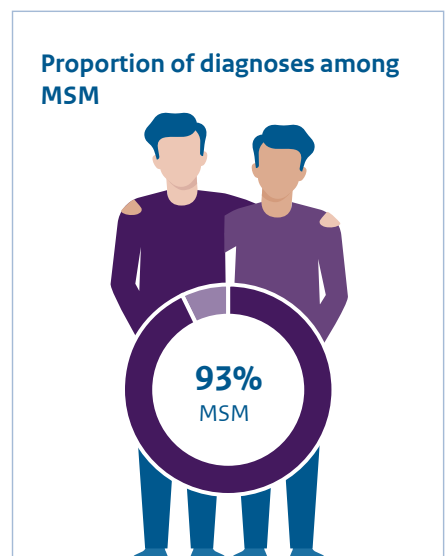
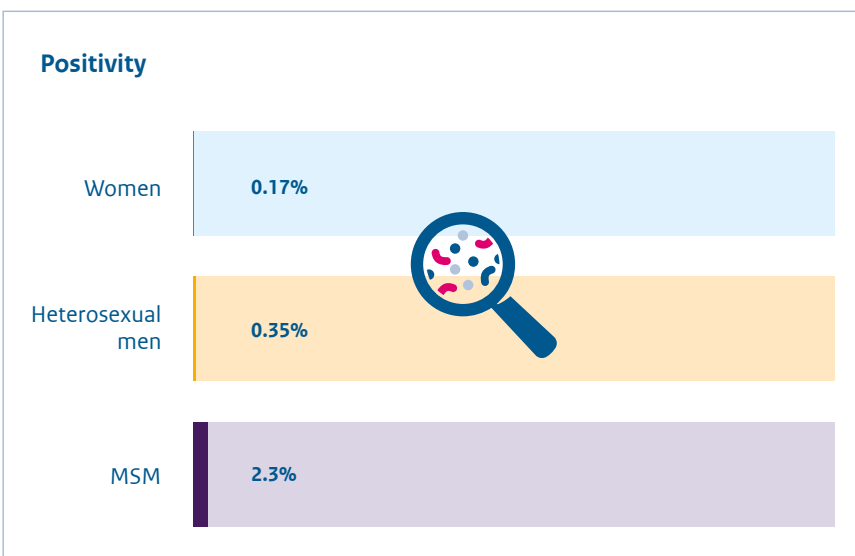
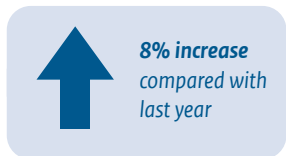
Positivity



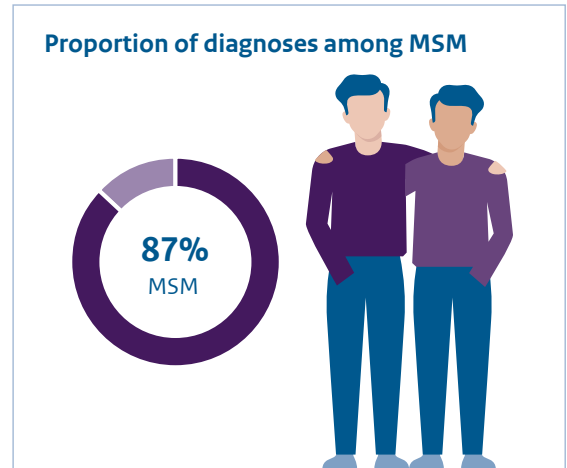
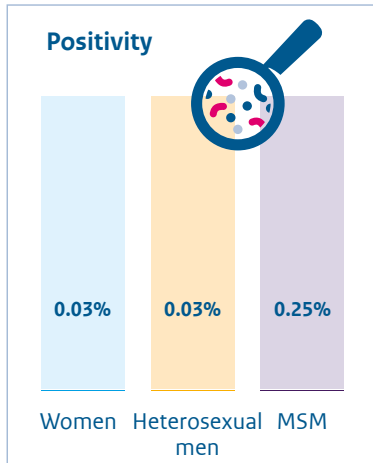
Gonorrhoea



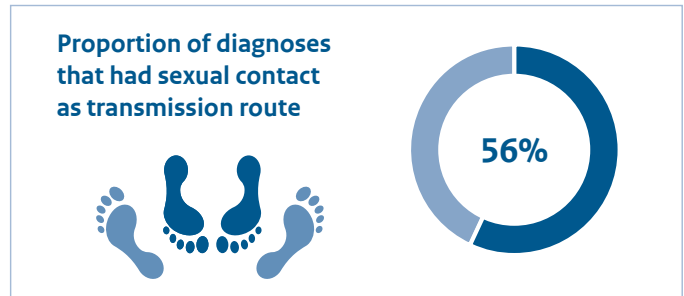
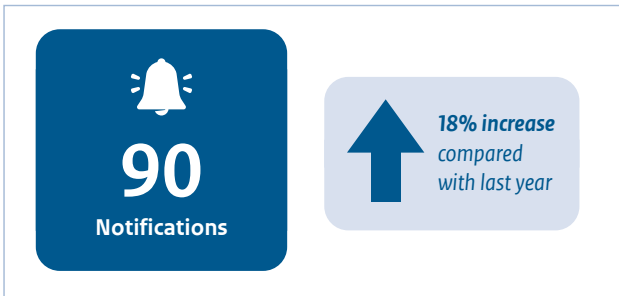
Infectious syphilis



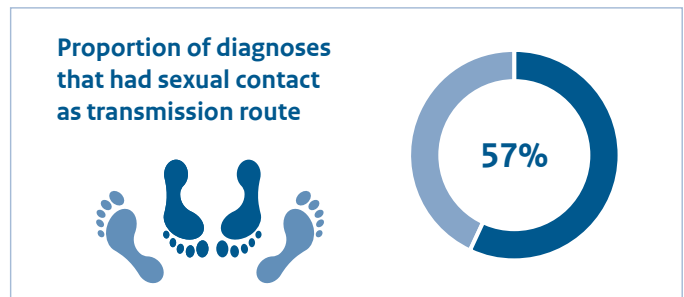
HIV



Acute hepatitis B



Acute hepatitis C



PrEP-pilot

