



Epidemiological report of SARS-CoV-2 on the Dutch Caribbean CAS- and BES-islands:

Week 29 (July 15th - July 21st, 2021)

Produced by the National Institute for Public Health and the Environment of the Netherlands - RIVM
22 July 2021, 19:00 pm AST

For general information on surveillance of COVID-19 on the CAS-BES-islands, see the next page.

Summary

Between July 15th and July 21st, 2021, 646 people on the Caribbean islands received a positive SARS-CoV-2 test result: 73 in Aruba, 509 in Curaçao, 39 in Sint Maarten, and 25 on Bonaire.

In the past week, Aruba reported an incidence rate of 58 SARS-CoV-2 infections per 100,000 inhabitants, which is an increase compared to a week earlier (33/100,000 on July 15th). There are currently 4 hospital admissions, 2 of which are in the COVID-IC. Genomic surveillance shows additional cases of the deltavariant on the island in week 27 (40%). Additionally, local genomic surveillance has also detected new cases of the deltavariant (32% in week 26), indicating an increase in the local transmission of the variant.

On Bonaire, the number of SARS-CoV-2 infections has increased over the past week. Last week, 108 people per 100,000 inhabitants received a positive SARS-CoV-2 test result, a sharp increase in the incidence from a week earlier (56/100,000 on July 15th). The positivity rate was 11% this week. The island reports an increase in the number of import cases from the Netherlands. Additionally, new clusters have been reported in schools and in the professional setting. The alpha variant was until recently still dominant on the island (100% in week 26). Local genomic surveillance shows a higher proportion of delta variant (88,2% of 18 samples in week 28).

Curaçao reported an incidence rate of 310 SARS-CoV-2 infections per 100,000 inhabitants, an alarming increase compared to a week earlier (105/100,000 on July 15th). This island also reports an increase in detected import cases, especially among travelers from Cuba and the Netherlands. The increase in the number of new infections in recent days is related to several clusters, including a nightlife club, beach club, student housing and the marine base. There is currently 1 patient admitted to the COVID nursing ward.

In the past week, Dutch St Maarten reported an incidence rate of 63 people per 100,000 inhabitants, which is an increase compared to a week earlier (42/100,000 on July 15th). There are currently 2 hospital admissions, none of which are in the COVID-IC on a ventilator. Surveillance shows a lower circulation of the alphavariant on the island (28,6% in week 27). There is also indication of local transmission of the deltavariant (71,4% in week 27). The incidence on the French side of the island remains high (144/100.000 in week 27) and a new cluster has been identified on this side of the island.

No active SARS-CoV-2 infections have been reported on Saba since May 11th, 2021. Since January 28th, 2021, no new persons with a positive SARS-CoV-2 result have been reported on St. Eustatius.

Information on surveillance of COVID-19 on the CAS- and BES-islands

The Caribbean part of the Kingdom of the Netherlands entails the countries Curaçao, Aruba, and Dutch St Maarten (CAS-islands), as well as the overseas municipalities Bonaire, St Eustatius, and Saba (BES-islands). Surveillance data of SARS-CoV-2 cases is collected on each island in collaboration with local medical professionals, laboratories, and public health departments. These surveillance data are shared by the CAS- and BES-islands through daily updates and stored in the SARS-CoV-2 IHR Daily Overview Dutch Caribbean; an overview of the spread of SARS-CoV-2 on the CAS- and BES-islands.

This report has been generated using surveillance data registered at the RIVM between March 22nd 2020 and 21 July 2021. Sometimes surveillance data is reported to the RIVM one or multiple days later than documented on the islands. The data presented in this report are based on the date of registration at the RIVM. Because islands retrospectively correct surveillance data, the crude estimates in this report may differ slightly from the data shared by each island. The data reported here may lag behind in case more recent data has not yet been reported to the RIVM by respective islands.

Everyone with symptoms of COVID-19 can get tested. However, it is plausible that not all individuals with a SARS-CoV-2 infection are tested. The actual numbers of cases can therefore be higher than the numbers reported here. The CAS- and BES-islands also register when individuals with a positive SARS-CoV-2 test result have recovered. These data are used to report the current number of active cases in Table 3. The number of active cases refers to the number of individuals who tested positive for SARS-CoV-2 and who have not yet recovered at the time of producing this report.

Disclaimer

Though this weekly report has been produced with the utmost care, it could possibly contain errors. Feedback on this overview is welcome.

Contact details:

RIVM COVID-19 Surveillance team (e-mail: CASBES-epi@rivm.nl)

Table of contents

	Page
1 Overview of reported SARS-CoV-2 cases on the CAS- and BES-islands	4
2 SARS-CoV-2 progression over time	9
3 SARS-CoV-2 three week average incidence rate, progression over time	15
4 Number of COVID-19 vaccine doses administered on the CAS-BES islands	16
5 Vaccination coverage on the CAS-BES islands	18

1 Overview of reported SARS-CoV-2 cases on the CAS- and BES-islands

Table 1: Number of laboratory confirmed cases with a positive test result for SARS-CoV-2 over the past 2 weeks, as reported to the RIVM by the CAS- and BES-islands

Island	Date: from-until	Number of performed tests	Number of laboratory confirmed tests with positive test result	Positivity rate %
Aruba ¹	05-07-2021 - 11-07-2021	181	28	15.5
	12-07-2021 - 18-07-2021	376	66	17.6
Bonaire	05-07-2021 - 11-07-2021	201	9	4.5
	12-07-2021 - 18-07-2021	172	19	11
Curaçao ²	05-07-2021 - 11-07-2021	10922	40	0.4
	12-07-2021 - 18-07-2021	11903	386	3.2
Saba ³	05-07-2021 - 11-07-2021	-	0	-
	12-07-2021 - 18-07-2021	-	0	-
Sint Eustatius	05-07-2021 - 11-07-2021	156	0	0
	12-07-2021 - 18-07-2021	0	0	-
Sint Maarten ⁴	05-07-2021 - 11-07-2021	-	-	-
	12-07-2021 - 18-07-2021	-	-	-

¹ This estimate concerns a crude positivity rate for Aruba. The Directie Volksgezondheid Aruba reports a corrected positivity rate through: <https://www.facebook.com/desaruba>.

² The Public Health Department on Curaçao estimates a corrected positivity rate. Therefore, estimates presented here may differ from positivity rates reported by Curaçao.

³ A '-' value indicates insufficient data was reported to the RIVM to report in this table.

⁴ The positivity rate for Dutch St Maarten has been estimated using data of the PCR tests analyzed only. Therefore, estimates presented here may differ from positivity rates reported by Dutch St Maarten (SLS), as those include data of rapid antigen tests as well.

Table 2: Number of laboratory confirmed cases with a positive SARS-CoV-2 test result, number of hospital admissions¹ and number of deceased cases, cumulative and for the previous week, on the CAS- and BES-islands, as reported to RIVM

Island	Cumulative			Previous week ²	
	Number of cases	Hospital admissions	Deceased	Number of cases	Deceased
Aruba	11271	605	109	73	1
Bonaire	1661	66	17	25	0
Curaçao	12962	555	126	509	0
Saba	7	1	0	0	0
Sint Eustatius	20	0	0	0	0
Sint Maarten	2695	178	34	39	0
Totaal	28616	1405	286	646	1

¹ The number of hospital admissions cannot be displayed for the previous week due to a delay in reporting these data. The current number of persons hospitalized due to or with COVID-19 is reported in Table 3.

² These have been reported to the RIVM between July 15th and July 21st, 2021.

Table 3: Current number of active SARS-CoV-2 cases and status of COVID-19 hospital occupancy on the CAS- and BES-islands, as reported to RIVM^{1,2}

Island	Number of active cases	Number of persons with COVID-19 on general hospital ward	Number of persons with COVID-19 hospitalized in the ICU
Aruba	116	2	2
Bonaire	17	0	0
Curaçao	561	1	0
Saba	0	0	0
Sint Eustatius	0	0	0
Sint Maarten	44	2	0
Totaal	738	5	2

¹ These have been reported to the RIVM between July 15th and July 21st, 2021.

² The number of active cases is defined as the number of COVID-19 infected persons who have not been confirmed to have recovered from COVID-19 infection at the time of reporting these data to RIVM. These data may lag behind when islands have limited public health capacity to confirm recovery among infected cases.

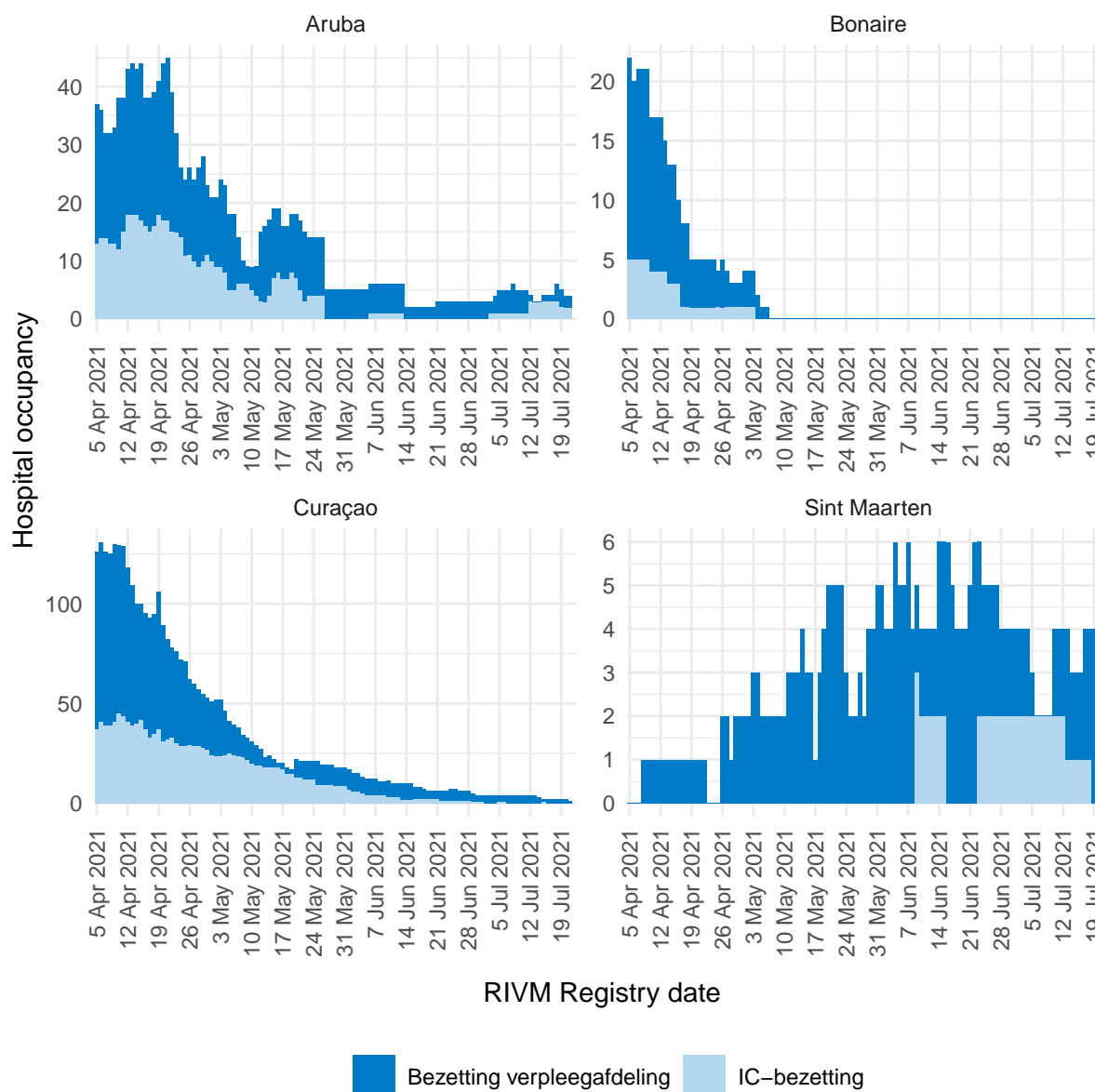


Figure 1: Progression of COVID-related hospital occupation over time ^{1,2,3,4,5}

¹ This figure presents the number of reported persons who have tested positive for SARS-CoV-2 during or before admission on the general hospital ward and/or ICU.

² The light blue data represent the ICU-occupation over time, per island. The dark blue data represent the occupation of the general hospital ward over time, per island.

³ Due to the low number of hospitalised patients on Saba en St Eustatius, these islands have not been included in this graph.

⁴ Based on the most recent data registered for Bonaire, the admission status is unknown for 234 persons who have tested positive for SARS-CoV-2 since January 1st, 2021. These cases have not been included in this graph.

⁵ The reported data has been presented by the date of reporting to the RIVM. These numbers can lag behind when the most recent data has not yet been reported to the RIVM.

Table 4: SARS-CoV-2 incidence rate per 100,000 residents on the CAS- and BES-islands¹, as reported to RIVM

Island	Incidence per 100,000 residents	
	Previous week ²	Previous two weeks ³
Aruba	49	81
Bonaire	86	142
Curaçao	259	364
Saba	0	0
Sint Eustatius	0	0
Sint Maarten	58	99

¹ The calculated incidence rates include the estimated number of undocumented migrants on each island, see Table 5.

² The incidence rate per 100,000 persons, for the previous week, has been calculated from 15 juli 2021 until 21 juli 2021.

³ The incidence rate per 100,000 residents, for the previous two weeks, has been calculated from 8 juli 2021 until 21 juli 2021.

Table 5: Number of residents and acreage of the CAS- and BES-islands¹

Island	Capital city	Residents	Acreage	Political status
Aruba	Oranjestad	125.282	180 km ²	Country within the Kingdom of The Netherlands
Bonaire	Kralendijk	23.173	288 km ²	Dutch municipality
Curaçao	Willemstad	164.223	444 km ²	Country within the Kingdom of The Netherlands
Saba	The Bottom	1.918	13 km ²	Dutch municipality
Sint Maarten	Philipsburg	62.323	34 km ²	Country within the Kingdom of The Netherlands
Sint Eustatius	Oranjestad	3.142	21 km ²	Dutch municipality

¹ These numbers refer to the 2021 population sizes. Each island counts a substantial population of undocumented migrants. The reported incidence rates include the estimated population of undocumented migrants. On Aruba, Curaçao, and Dutch St Maarten the population size is estimated to be between 8,000 and 20,000 migrants in 2021. On Bonaire the population size is estimated around 1,400 migrants. These data are relevant to include as these populations are difficult to reach for local public health services and often have less access to curative care.

2 SARS-CoV-2 progression over time

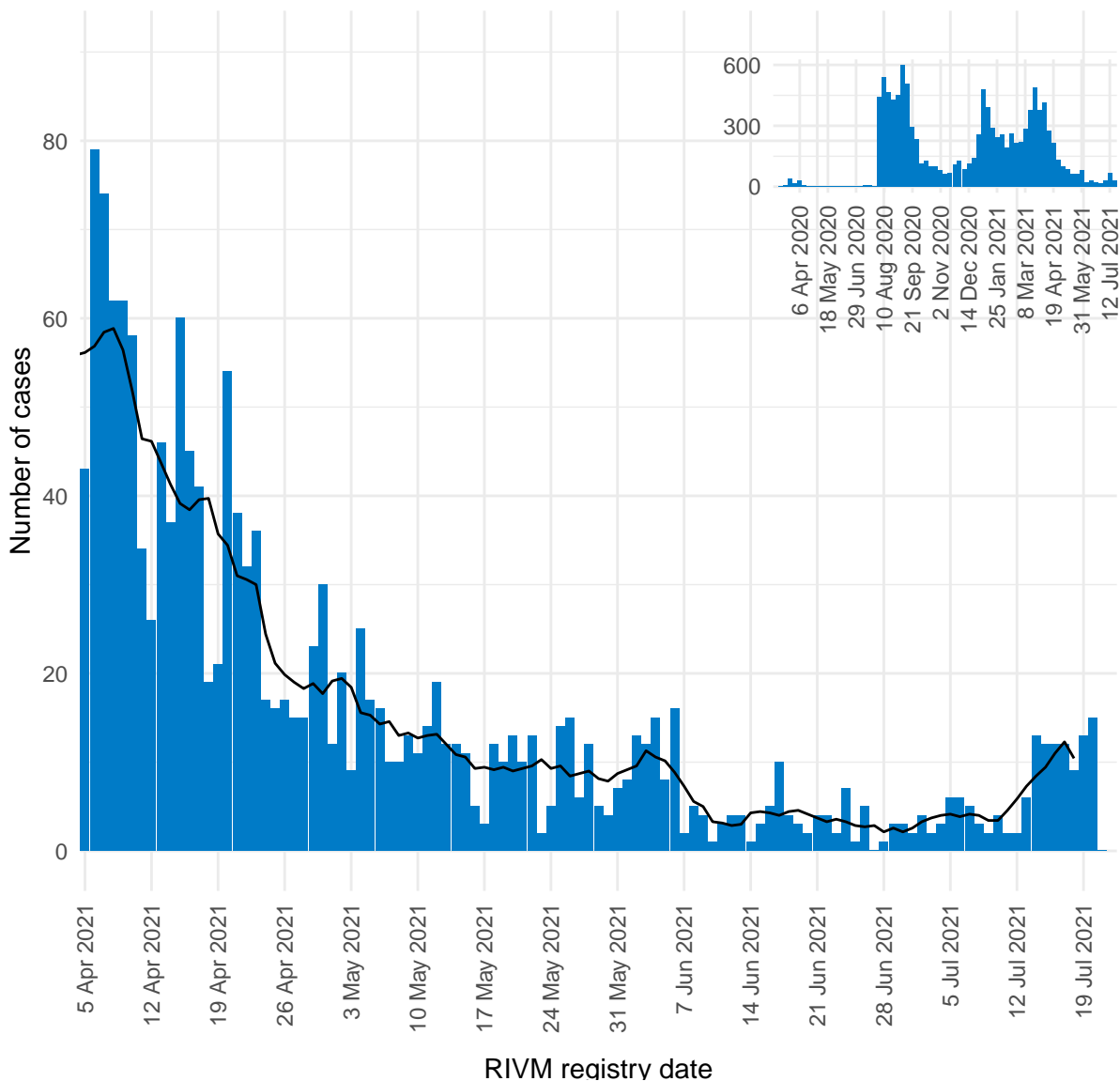


Figure 2: Number of daily reported SARS-CoV-2 cases on Aruba, presented by RIVM registry date^{1,2}.

¹ This figure displays the daily number of new SARS-CoV-2 by date of reporting to the RIVM. The black line represents the 7-day moving average of new infections. The vertical axes of figures 1-6 differ due to dissimilarities in the quantity of cases between the islands.

² The reported data has been presented by the date of reporting to the RIVM. These numbers can lag behind when the most recent data has not yet been reported to the RIVM.

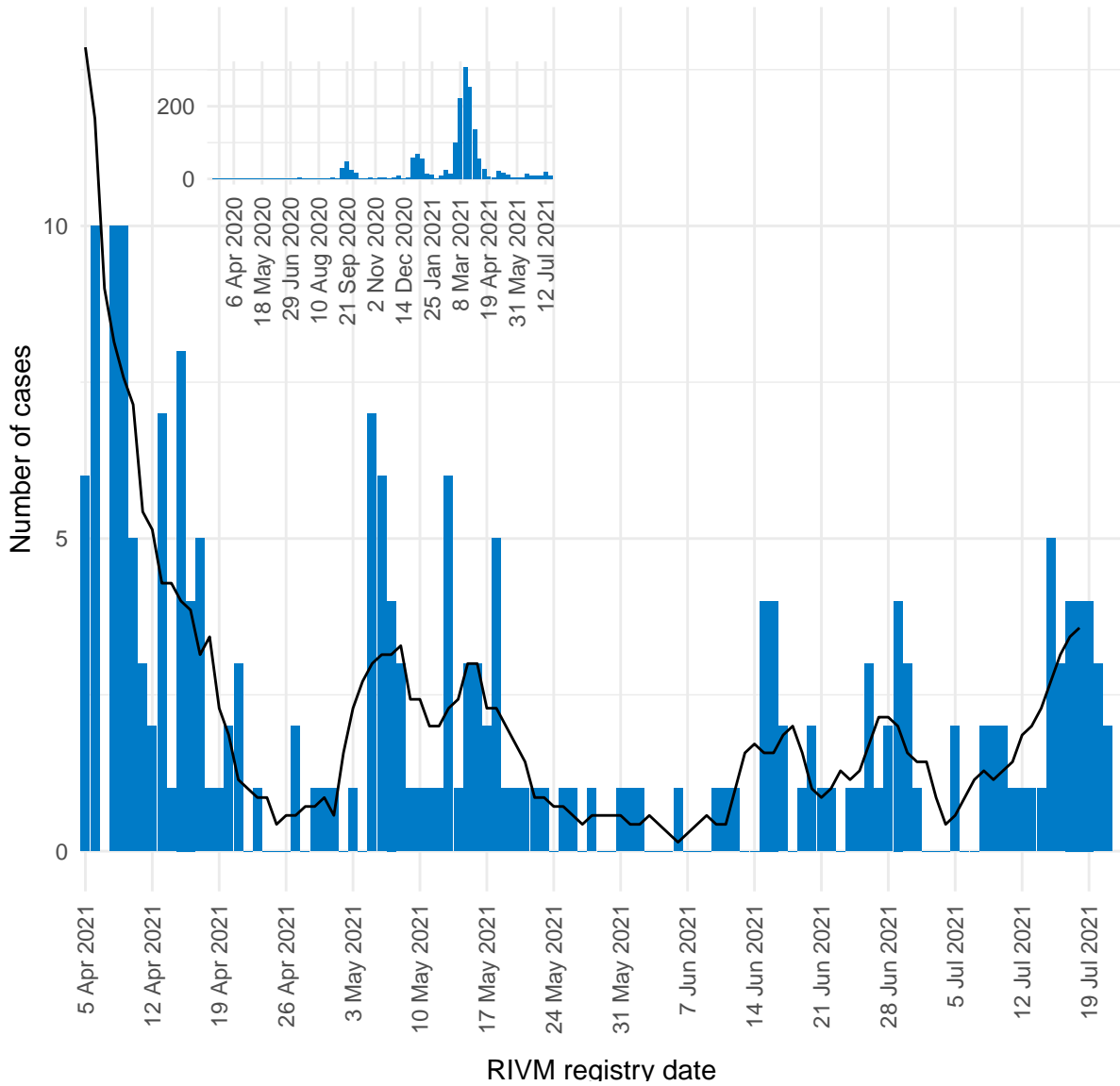


Figure 3: Number of daily reported SARS-CoV-2 cases on Bonaire, presented by RIVM registry date^{1,2}.

¹ This figure displays the daily number of new SARS-CoV-2 by date of reporting to the RIVM. The black line represents the 7-day moving average of new infections. The vertical axes of figures 1-6 differ due to dissimilarities in the quantity of cases between the islands.

² The reported data has been presented by the date of reporting to the RIVM. These numbers can lag behind when the most recent data has not yet been reported to the RIVM.

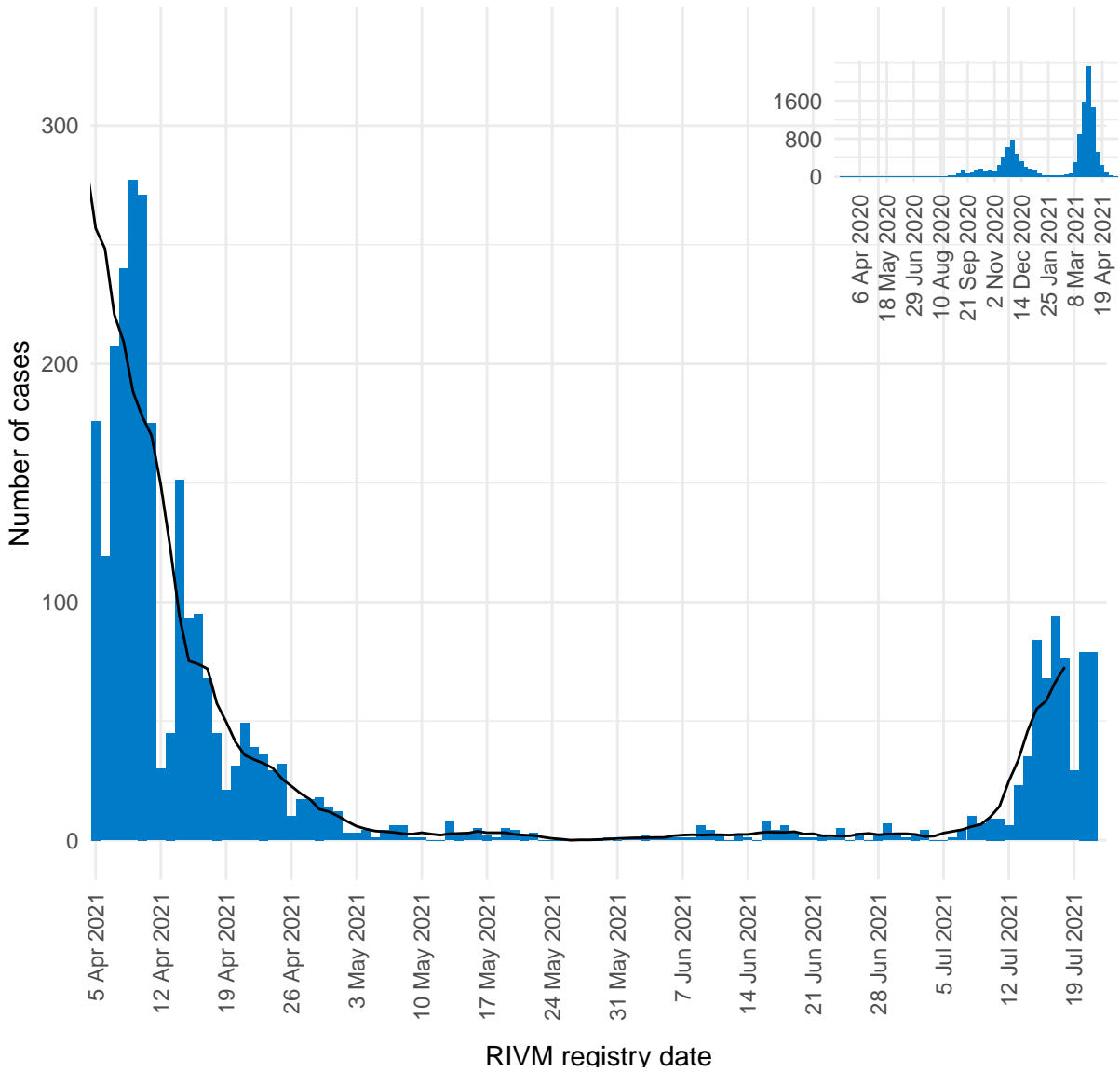


Figure 4: Number of daily reported SARS-CoV-2 cases on Curaçao, presented by RIVM registry date^{1,2}.

¹ This figure displays the daily number of new SARS-CoV-2 by date of reporting to the RIVM. The black line represents the 7-day moving average of new infections. The vertical axes of figures 1-6 differ due to dissimilarities in the quantity of cases between the islands.

² The reported data has been presented by the date of reporting to the RIVM. These numbers can lag behind when the most recent data has not yet been reported to the RIVM.

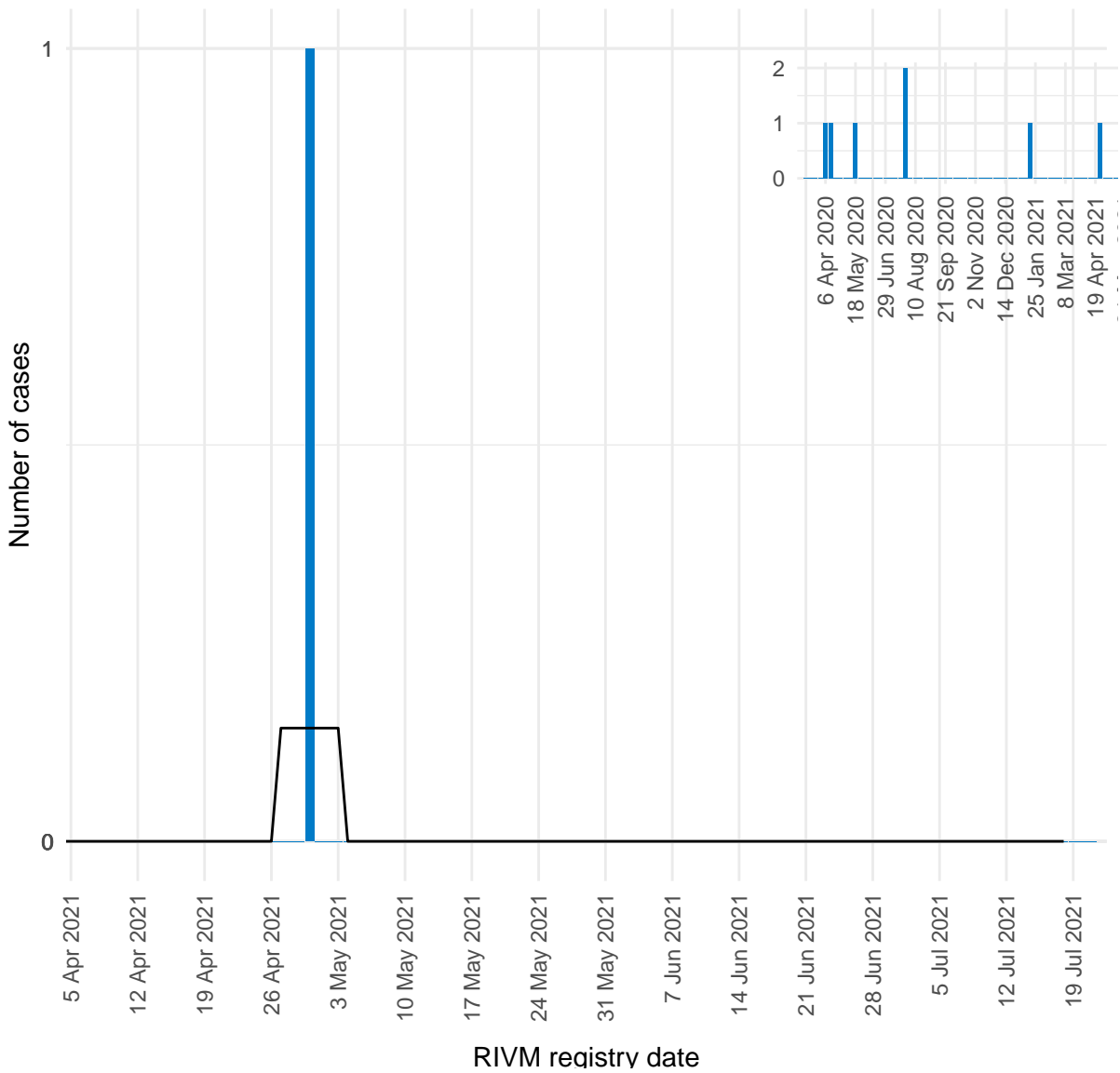


Figure 5: Number of daily reported SARS-CoV-2 cases on Saba, presented by RIVM registry date^{1,2}.

¹ This figure displays the daily number of new SARS-CoV-2 by date of reporting to the RIVM. The black line represents the 7-day moving average of new infections. The vertical axes of figures 1-6 differ due to dissimilarities in the quantity of cases between the islands.

² The reported data has been presented by the date of reporting to the RIVM. These numbers can lag behind when the most recent data has not yet been reported to the RIVM.

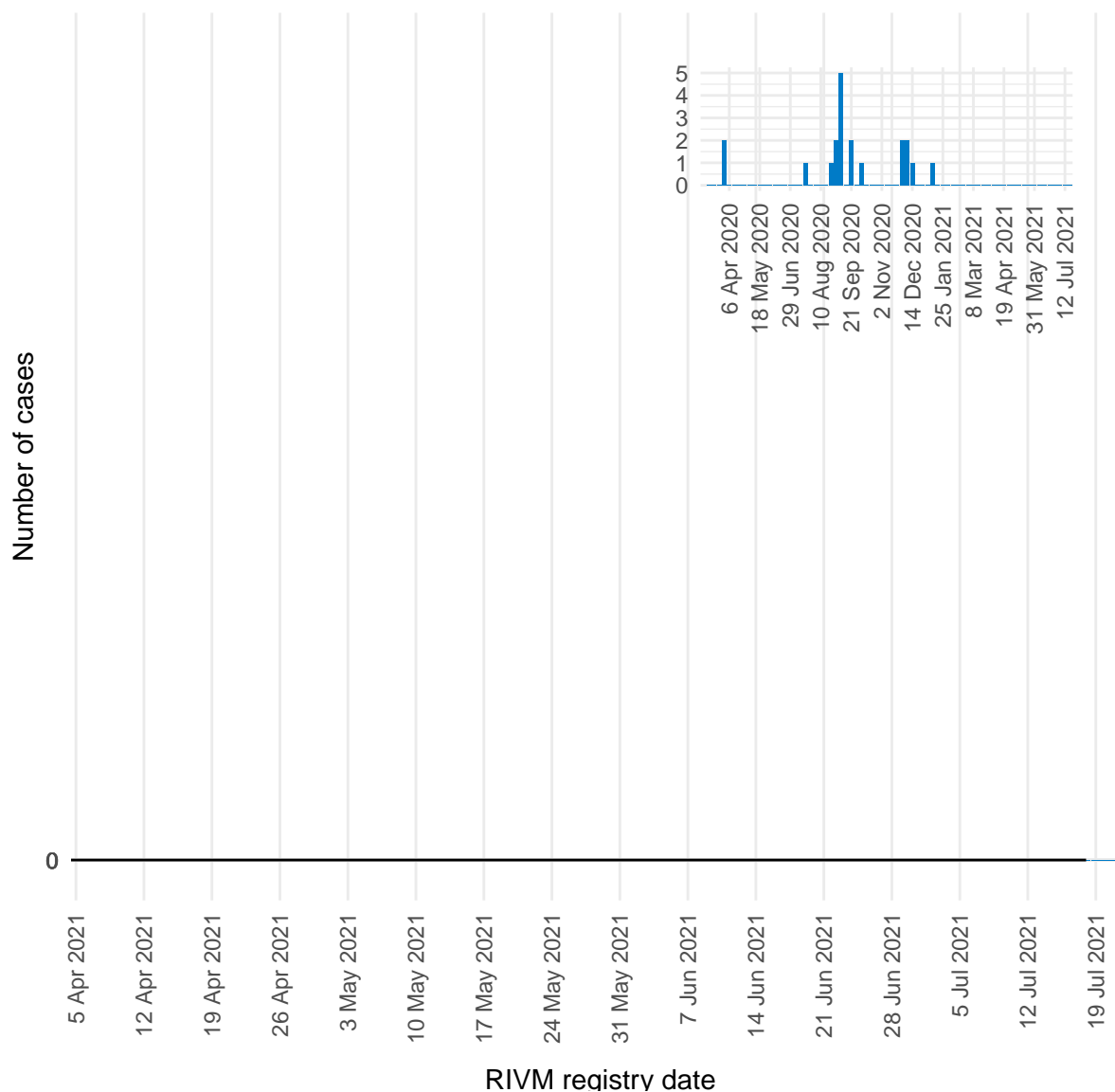


Figure 6: Number of daily reported SARS-CoV-2 cases on St Eustatius, presented by RIVM registry date^{1,2}.

¹ This figure displays the daily number of new SARS-CoV-2 by date of reporting to the RIVM. The black line represents the 7-day moving average of new infections. The vertical axes of figures 1-6 differ due to dissimilarities in the quantity of cases between the islands.

² The reported data has been presented by the date of reporting to the RIVM. These numbers can lag behind when the most recent data has not yet been reported to the RIVM.

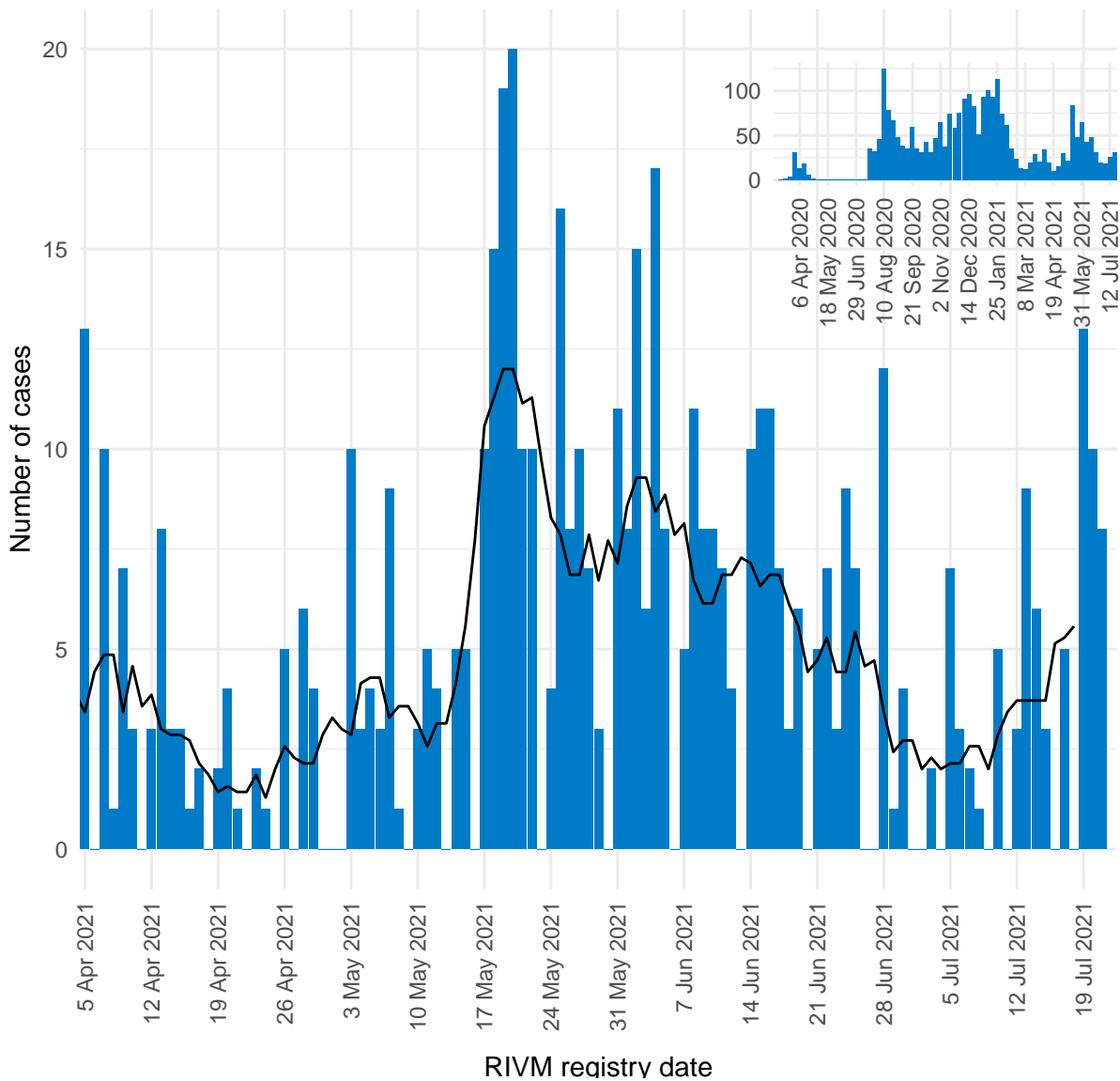


Figure 7: Number of daily reported SARS-CoV-2 cases on Dutch St Maarten, presented by RIVM registry date^{1,2}.

¹ This figure displays the daily number of new SARS-CoV-2 by date of reporting to the RIVM. The black line represents the 7-day moving average of new infections. The vertical axes of figures 1-6 differ due to dissimilarities in the quantity of cases between the islands.

² The reported data has been presented by the date of reporting to the RIVM. These numbers can lag behind when the most recent data has not yet been reported to the RIVM.

3 SARS-CoV-2 three week average incidence rate, progression over time

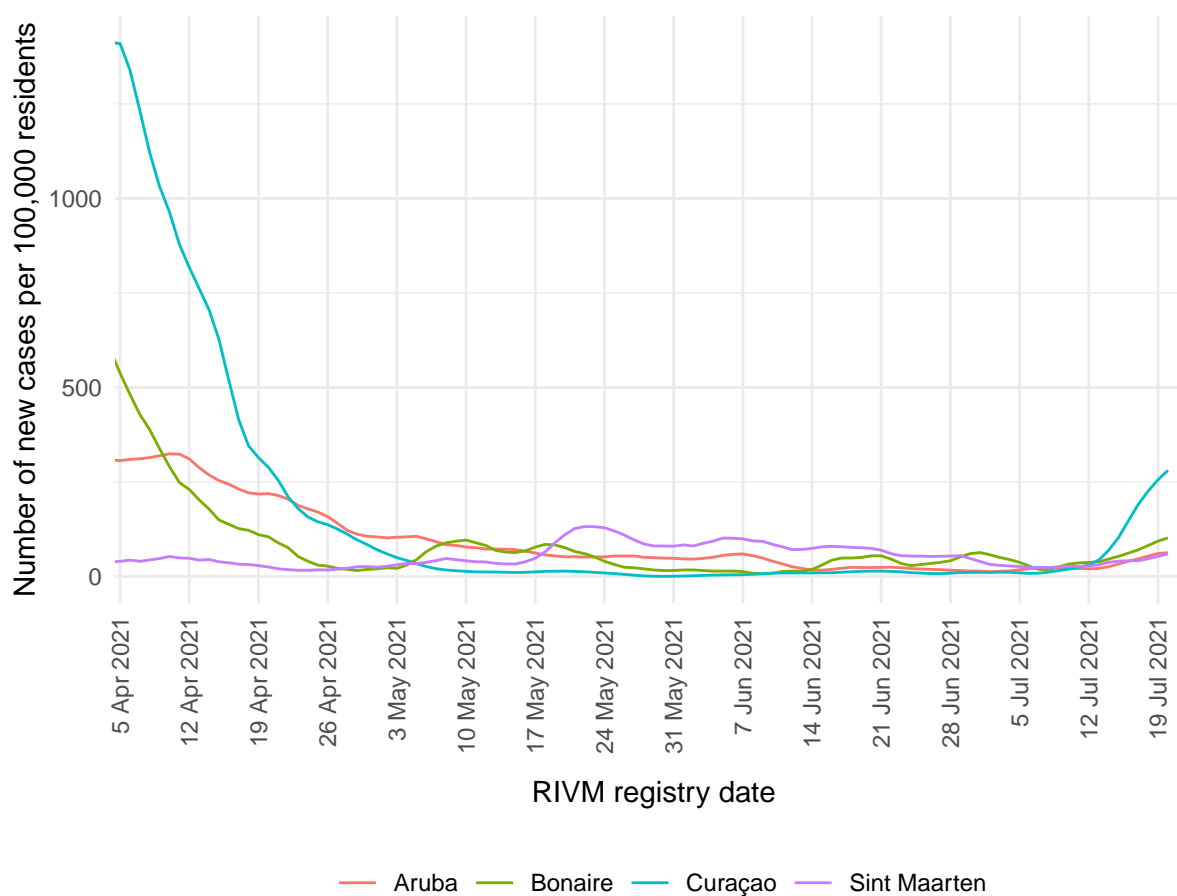


Figure 8: Three week average number of reported cases per 100,000 residents by RIVM registry date, on Curaçao, Aruba, Dutch St Maarten, and Bonaire^{1,2}.

¹ This figure displays the 3-week average incidence rate per island per 100,000 residents, including the population of undocumented migrants on each island. Each line on the vertical axis indicates a weekly average of the incidence rate (defined as the number of new cases per 100,000 persons per week, over the total population) over a period of three weeks. For example: the reported value on January 4th 2021, is the weekly average of the incidence rate between December 28th, 2020 and January 11th, 2021.

² Due to the small number of reported cases on Saba and St Eustatius, these islands have not been included in this figure.

4 Number of COVID-19 vaccine doses administered on the CAS-BES islands

Table 6: Number of first and second doses of COVID-19 vaccine administered until 19 juli 2021¹.

	Aruba	Bonaire	Curaçao	Saba	Sint Eu- statius	Sint Maarten ²
Number of persons who have received their first dosis (aged 12+ years)	68968	15431	91132	1453	1325	23909
Number of persons who have received their first and second dosis (aged 12+ years)	61612	12975	80700	1414	1211	19735
Number of fully vaccinated persons (aged 12+ years) ³	62653	12975	81774	1414	1211	19735
Number of high risk persons (aged 18-59 years) who have received their first dosis ^{4,5}	3789	-	9005	-	-	4415
Number of fully vaccinated high risk persons (aged 18-59 years) ⁵	3555	-	8155	-	-	2730

¹ The vaccination coverage data presented here is reported by the islands to VWS on a weekly basis. These data may lag behind from the vaccination coverage data presented by the island officials.

² These data refer to the numbers of vaccinated persons on the Dutch side of St Maarten. Vaccination coverage on the French side of St Martin is reported by Santé Publique France on a weekly basis.

³ The number of fully vaccinated persons is defined as the number of completed vaccinations. This also includes persons who only require one dose of vaccine to be considered as fully vaccinated, due to having a history of SARS-CoV-2 infection. Both Aruba and Curaçao are reporting these data separately from the number of persons who have received two doses of vaccine. Dutch St Maarten and the BES-islands are currently not reporting these data. The number of completed vaccinations on those islands may therefore be an underestimation.

⁴ For the BES islands, no information was collected about high- and low-risk groups, because all residents within this age group could register for a vaccination at the same time.

⁵ Vaccination data for persons aged 60+ cannot be displayed here because these data are not reported to RIVM.

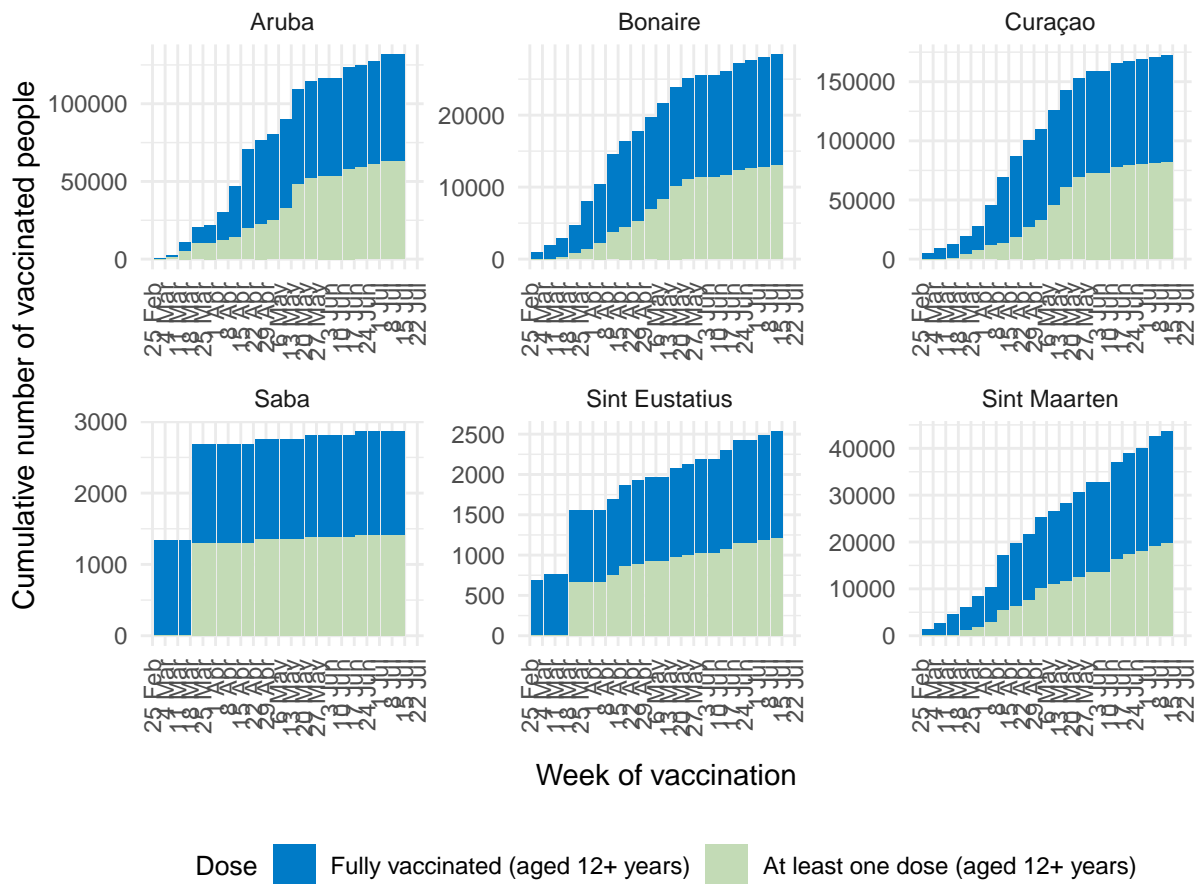


Figure 9: Number of first and second doses of COVID-19 vaccine administered, cumulative by vaccination date, until 19 juli 2021^{1,2,3}.

¹ The vaccination coverage data presented here is reported by the islands to VWS on a weekly basis. These data may lag behind from the vaccination coverage data presented by the island officials.

² These data refer to the numbers of vaccinated persons on the Dutch side of St Maarten. Vaccination coverage on the French side of St Martin is reported by Santé Publique France on a weekly basis.

³ The number of fully vaccinated persons is defined as the number of completed vaccinations. This also includes persons who only require one dose of vaccine to be considered as fully vaccinated, due to having a history of SARS-CoV-2 infection. Both Aruba and Curaçao are reporting these data separately from the number of persons who have received two doses of vaccine. Dutch St Maarten and the BES-islands are currently not reporting these data. The number of completed vaccinations on those islands may therefore be an underestimation.

5 Vaccination coverage on the CAS-BES islands

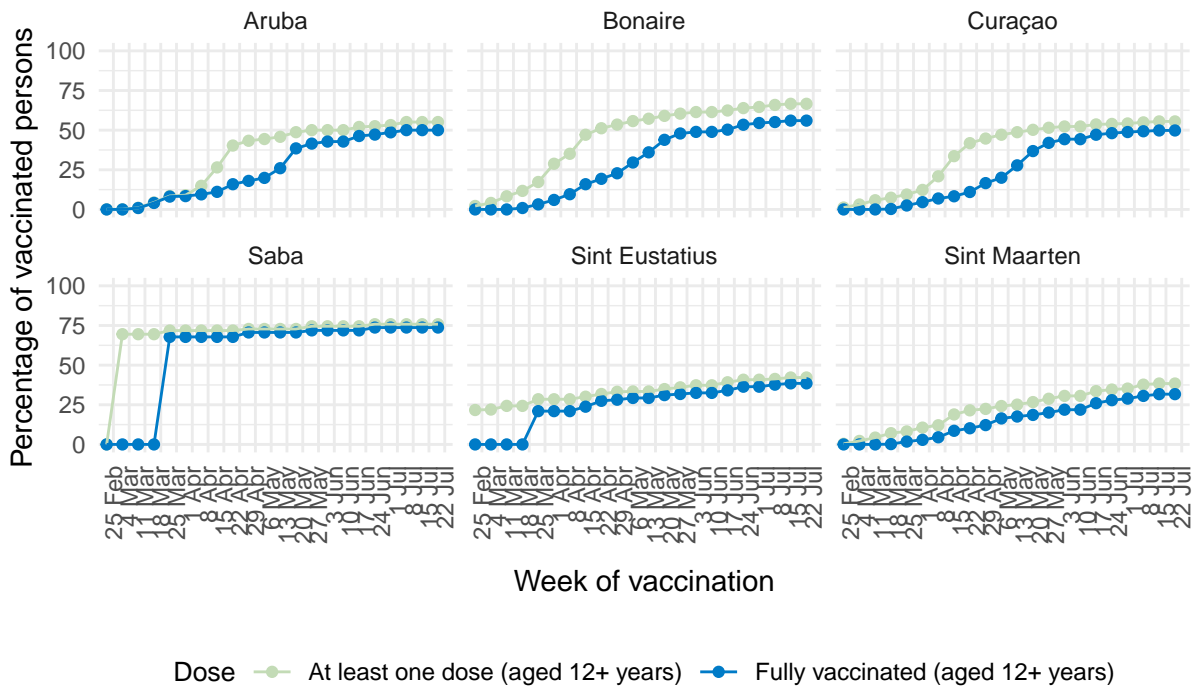


Figure 10: Percentage of residents aged 12 years or older who have received at least one vaccination dose and the percentage of residents aged 12 or older who have been fully vaccinated according to the current vaccination schedule of the vaccines used¹⁻⁴.

¹ The vaccination coverage data presented here is reported by the islands to VWS on a weekly basis. These data may lag behind from the vaccination coverage data presented by the island officials.

² These data refer to the numbers of vaccinated persons on the Dutch side of St Maarten. Vaccination coverage on the French side of St Martin is reported by Santé Publique France on a weekly basis.

³ The vaccination coverage is defined as: Persons aged 12+ who have received at least one dose. A one-dose schedule is sufficient for persons who have indicated that they have demonstrably experienced COVID-19 in the past six months. They are included in the 'fully vaccinated' percentages presented in this figure. These numbers are reported separately per week 21 by Curaçao and week 22 by Aruba.

⁴ The number of fully vaccinated persons is defined as the number of completed vaccinations. This also includes persons who only require one dose of vaccine to be considered as fully vaccinated, due to having a history of SARS-CoV-2 infection. Both Aruba and Curaçao are reporting these data separately from the number of persons who have received two doses of vaccine. Dutch St Maarten and the BES-islands are currently not reporting these data. The number of completed vaccinations on those islands may therefore be an underestimation.